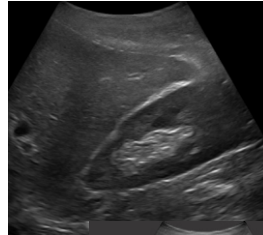


SonoView Mini

Ultrasound via Telepresence
Empowering YOU to make the diagnosis

Complete Ultrasound Exam • Render diagnosis
• Keep patient in clinic •
Guarantee Profitability • Enhance revenue



Over 8
transducers
available
ranging from 1 to
15MHz

- Don't let it's size fool you this is a serious Ultrasound system.
- SonoView Mini is a new generation, USB-powered, pocket-sized point of care ultrasound imaging system.
- SonoView offers ultrasound screening in B, M, B/M, 4B modes together with Speckle Reduction Processing, Trapezoid and Spatial compound imaging.
- Various transducers can be connected and disconnected in seconds thanks to advanced probe recognition technology. SonoView Mini is a fanless device so it's well suited for ultrasound-guided procedures.
- The Mini is designed from the ground up to be fully controlled from a remote computer providing possibilities for tele-medicine and educational purposes.

Revo's Got You Covered

Why aren't you doing your own ultrasound?

What are your objections?

Not enough training?

Price?

Lack of Time?

Fear of Ultrasound?

We have trained over
5,000 veterinarians
and techs to scan
via telepresence!



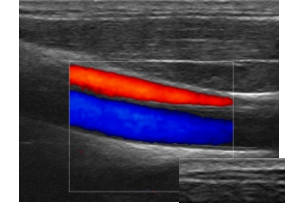
Call us at **770-425-7102**, it costs nothing to learn your options!

90% less expensive than using a roving sonographer, with expert help guiding you on every case.

SonoView Color

Ultrasound via Telepresence
Empowering YOU to make the diagnosis

Complete Ultrasound Exam • Render diagnosis
• Keep patient in clinic •
Guarantee Profitability • Enhance revenue



Over 14
transducers available
ranging from 1 to
18MHz

SonoView Color is a new, innovative generation of high performance PC-based Color Doppler Ultrasound.

Scanning Modes:

- B, B+B, 4B, B+M, M
- CFM Color Flow Mapping
- PDI Power Doppler
- DPDI Directional Power Doppler
- PW Pulsed Wave Spectral Doppler
- CW Continuous Wave Spectral Doppler
- HPRF High Pulse Repetition Frequency
- Duplex (B+PW/CW)
- Triplex B+Color Doppler+PW/CW

Upgrade in first year
and get full value of
your Mini system

All transducers are broad band, multi-frequency with multiple focal zones capability.